

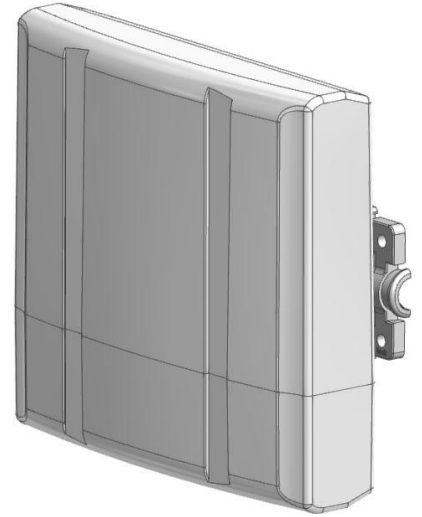
Multi-Band Patch Antenna

839 ~ 894, 1710~2120 MHz / 6 dBi, 8dBi


CPI-CPB-68

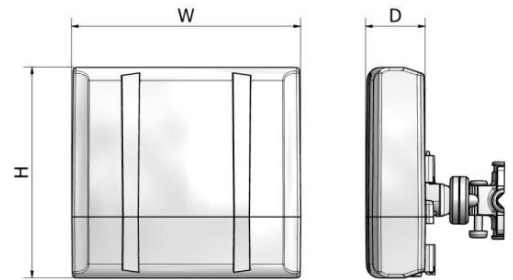
i. Electrical Specification

Frequency Range (MHz)	839 ~ 894	1710 ~ 2120
Polarization	Vertical	Vertical
Band Width	55 MHz	410 MHz
Gain	≥ 6 dBi	≥ 8 dBi
Beam width	Horizontal	70 ~ 90°
	Vertical	70 ~ 90°
F-B ratio	13dB @ -180 ± 30°	15dB @ -180 ± 30°
VSWR	1 : 1.5	1 : 1.5
Impedance	50 Ω	
Maximum input power	≤ 10 W	

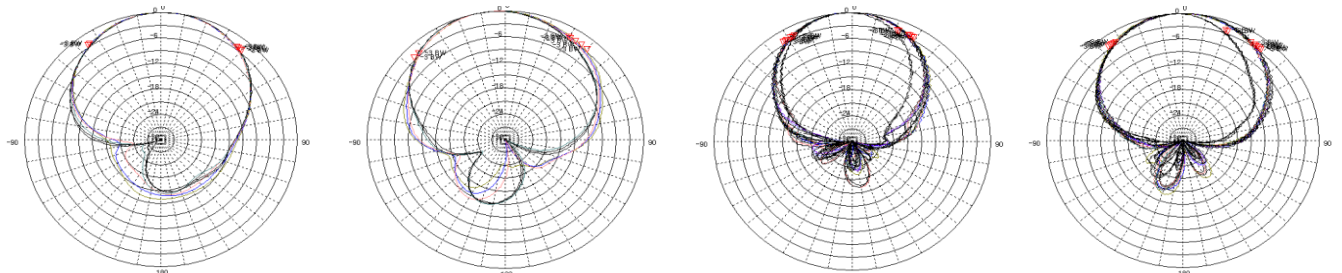


ii. Mechanical Specification

Radom Dimension (WxDxH)	168 x 43 x 155 mm	
Connector Type	SMA-J (Female)	
Withstand Wind Pressure	-	
Radiator Material	AL	
Radome Material	ASA	
Radome Color		
	Cool Gray 1C Cool Gray 4C	
Mechanical Down Tilt	Up, Down ± 30°	
	Left, Right ± 30°	
Temperature	-40 °C ~ 70 °C	
Weight (without clamp)	345 g	
Packing Weight	-	



iii. Radiation Pattern



Horizontal Pattern

Vertical Pattern

Horizontal Pattern

Vertical Pattern

Low Band

High Band